

i9900 / i9950 PIXUS 9900i PARTS CATALOG

REVISION 0

8580A001AA	i9900, 120V(US)
8580A002AA	i9900, 120V(CA)
8580A003AA	i9900, 120V(LAM LVT)
8580A004AA	i9900, 220V-240V(LAM HVT)
8580A005AA	i9950, 220V-240V(EUR)
8580A008AA	i9950, 220V-240V(ASA HVT)
8580A009AA	i9950, 220V-240V(AU)
8580A010AA	i9900, 220V-240V(KR)
8580A011AA	i9950, 220V-240V(GB)
8580A012AA	PIXUS 9900i, 100V(JP)
8580A013AA	i9950, 120V(TW)
8580A014AA	i9950, 220V-240V(HK)
8580A015AA	i9950, 220V-240V(CN)
8580A017AA	i9950, 220V-240V(EUM)

Canon

MAR. 2004

QY8-31C2-000

0304 N 0.00-0

**i9900 / i9950
PIXUS 9900i
PARTS
CATALOG**

Canon

Application

This manual has been issued by Canon Inc. for qualified person to learn technical theory, installation, maintenance, and repair of products. This manual covers all localities where the products are sold. For this reason, there may be information in this manual that does not apply to your locality.

Corrections

This manual could include technical inaccuracies or typographical errors due to improvements or changes in the products. When changes occur in applicable products or in the content of this manual, Canon will release technical information as the need arises. In the event of major changes in the contents of this manual over a long or short period. Canon will issue a new editions of this manual.

The following paragraph does not apply to any countries where such provisions are inconsistent with local law.

Trademarks

The product names and company names described in this manual are the registered trademarks of the individual companies.

Copyright

This manual is copyrighted with all rights reserved. Under the copyright laws, this manual may not be copied, reproduced or translated into another language, in whole or in part, without the written consent of Canon Inc.

Copyright © 2004 by Canon Inc.

CANON INC.

Inkjet SFP Quality Assurance Div.

16-1, Shimonoge 3-chome, Takatsu-ku, Kawasaki-shi,
Kanagawa 213-8512, Japan

DTP System

This manual was produced on an Apple® Power Macintosh® G3 personal computer and Canon LBP-2030PS laser beam printer.

Parts layout pictures were taken using Canon Digital Camera EOS D30, and edited with Adobe® Photoshop® 5.0.

KEY No. and Logotypes were created using

MACROMEDIA® FreeHand® 8J.

Documents and page layouts were created using

QuarkXpress® 3.3J.

Parts lists were created using Helix Technologies® Herix Xpress® and converted to EPS files.

I. CONTENTS

- A. ILLUSTRATION INDEX
- B. PARTS LAYOUT & PARTS LIST
- C. OPTIONS & CONSUMABLES
- D. SCREWS & WASHERS LIST
- E. TOOL
- F. NUMERICAL INDEX

II. ABOUT THIS MANUAL

A. ILLUSTRATION INDEX

For illustration index, the parts layout illustrations in this parts catalog are listed in abbreviated form in order of illustration number to identify the pages they appear on. To find an illustration of a part, see the ILLUSTRATION INDEX.

B. PARTS LAYOUT & PARTS LIST

Parts layout illustration

a) Parts search

Find a part from the parts layout illustration and find its key number from the parts list to identify the part number and name. For screws, nuts, washers, lock washers, pins, spacers, see SCREWS & WASHERS LIST.

Note: If parts have the same or similar shape but different specifications, their key number is assigned to several part numbers and names in the parts list.

b) Parts replacement procedure

To replace parts, the parts layout illustrations have figure numbers according to the disassembly procedure of the product. The parts that require careful work are shown the illustration.

Parts list

a) FIGURE & KEY No.

The FIGURE & KEY No. column corresponds to the key numbers assigned to the parts in the parts layout illustration. It also corresponds to the part locations printed on the PC board.

b) PART NUMBER

The PART NUMBER column gives the part numbers corresponding to the key numbers. To order a part, indicate the part number clearly.

Note: Parts marked NPN are not service parts.

c) RANK

The service parts with N in the RANK column are order parts.

d) QTY

The QTY column gives the number of parts in the corresponding components layout illustration.

e) DESCRIPTION

The DESCRIPTION column gives the part names in English.

To order a part, indicate the part name, too.

C. OPTIONS & CONSUMABLES

These are illustrations and a list of units that can be used as optional consumable equipments.

D. SCREWS & WASHERS LIST

This is a list of screws, nuts, washers, lock washers, pins, and spacers. The QTY column does not give the number of parts used.

E. TOOL LIST

This is a list of tools used for servicing products.

F. NUMERICAL INDEX

All the parts listed in this parts catalog are arranged in order of part number. You can identify part locations and names from the NUMERICAL INDEX

This page intentionally left blank

A. ILLUSTRATION INDEX

<p>FIGURE 1 PRINTER & PRINT HEAD</p>	<p>See Page B - 1</p>	<p>FIGURE 2 AC ADAPTER & OPERATION PANEL UNIT & UPPER COVER UNIT</p>	<p>See Page B - 3</p>
<p>FIGURE 3 LOGIC BOARD</p>	<p>See Page B - 5</p>	<p>FIGURE 4 SHEET FEED UNIT & BOTTOM CASE UNIT</p>	<p>See Page B - 7</p>
		<p>12 <PIXUS 9900i, i9950> When changing Key No.12, change Key No. 9, 10, 11, R1 and R2 at the same time.</p>	

FIGURE 5 OUTPUT TRAY & INK ABSORBER

See Page
B - 9

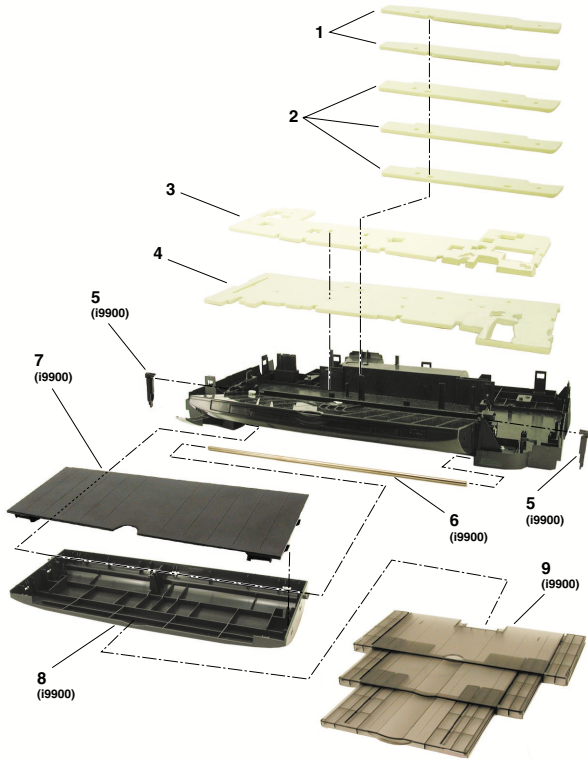


FIGURE 6 PLATEN UNIT

See Page
B - 11

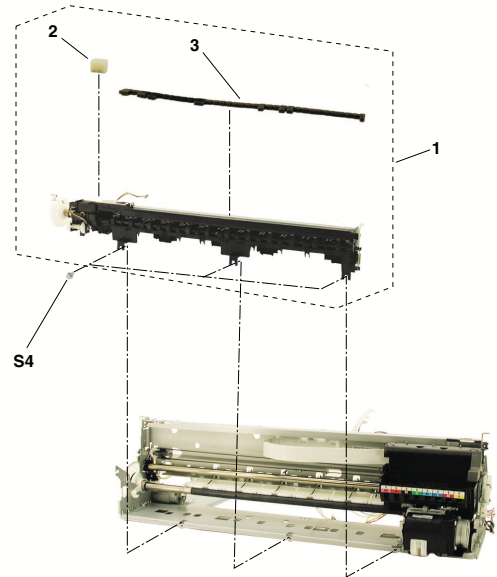


FIGURE 7 PURGE UNIT

See Page
B - 13

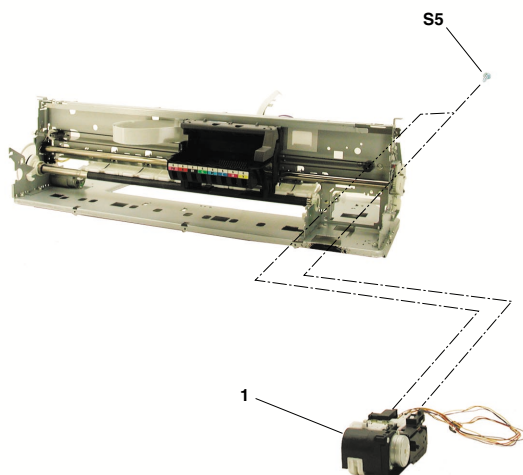


FIGURE 8 CARRIAGE UNIT

See Page
B - 15

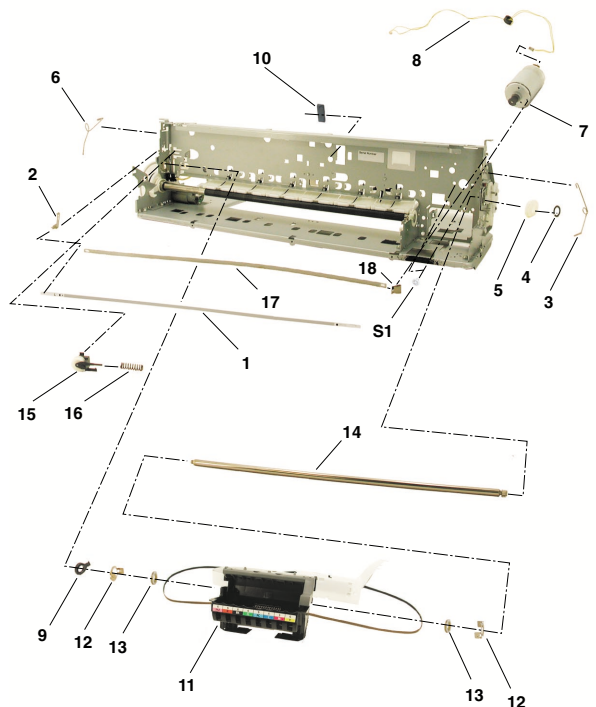


FIGURE 9 CARRIAGE LIFT PART

See Page
B - 17

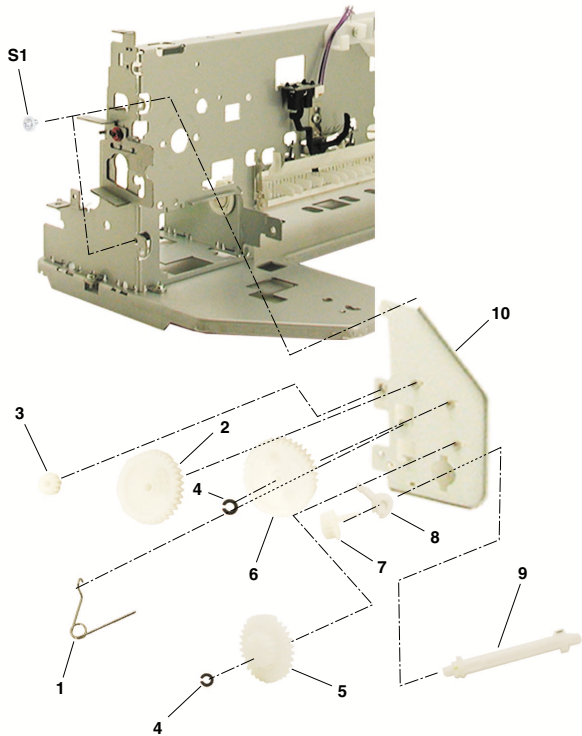


FIGURE 10 PAPER FEED PART (1)

See Page
B - 19

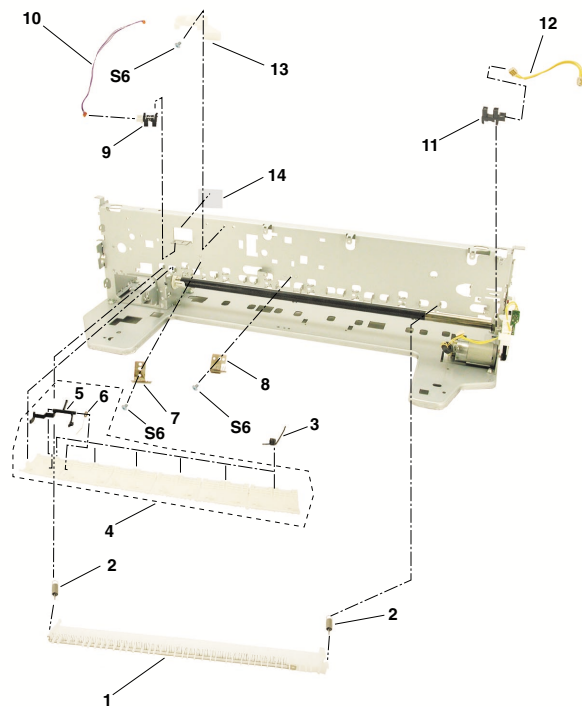


FIGURE 11 PAPER FEED PART (2)

See Page
B - 21

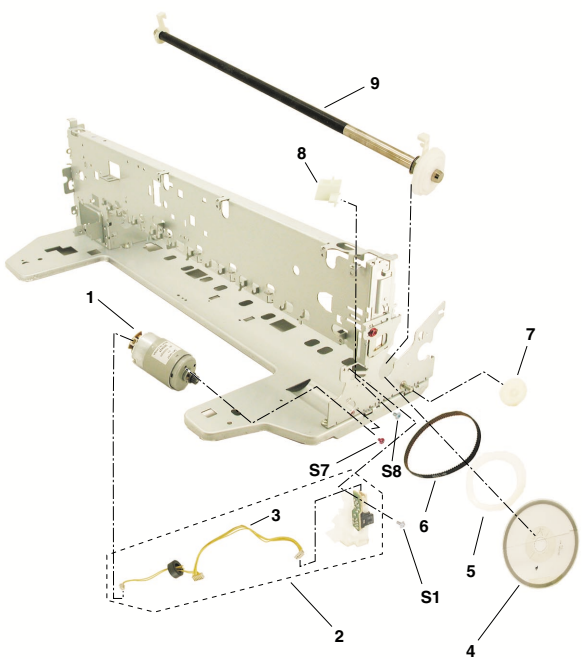


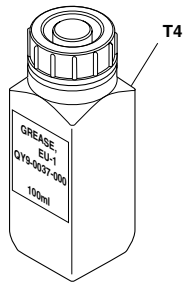
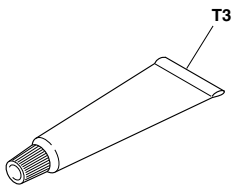
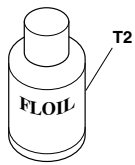
FIGURE 12 OPTION & CONSUMABLES

See Page
C - 1



FIGURE 13 TOOL

See Page
E - 1



B. PARTS LAYOUT & PARTS LIST

FIGURE 1 PRINTER & PRINT HEAD

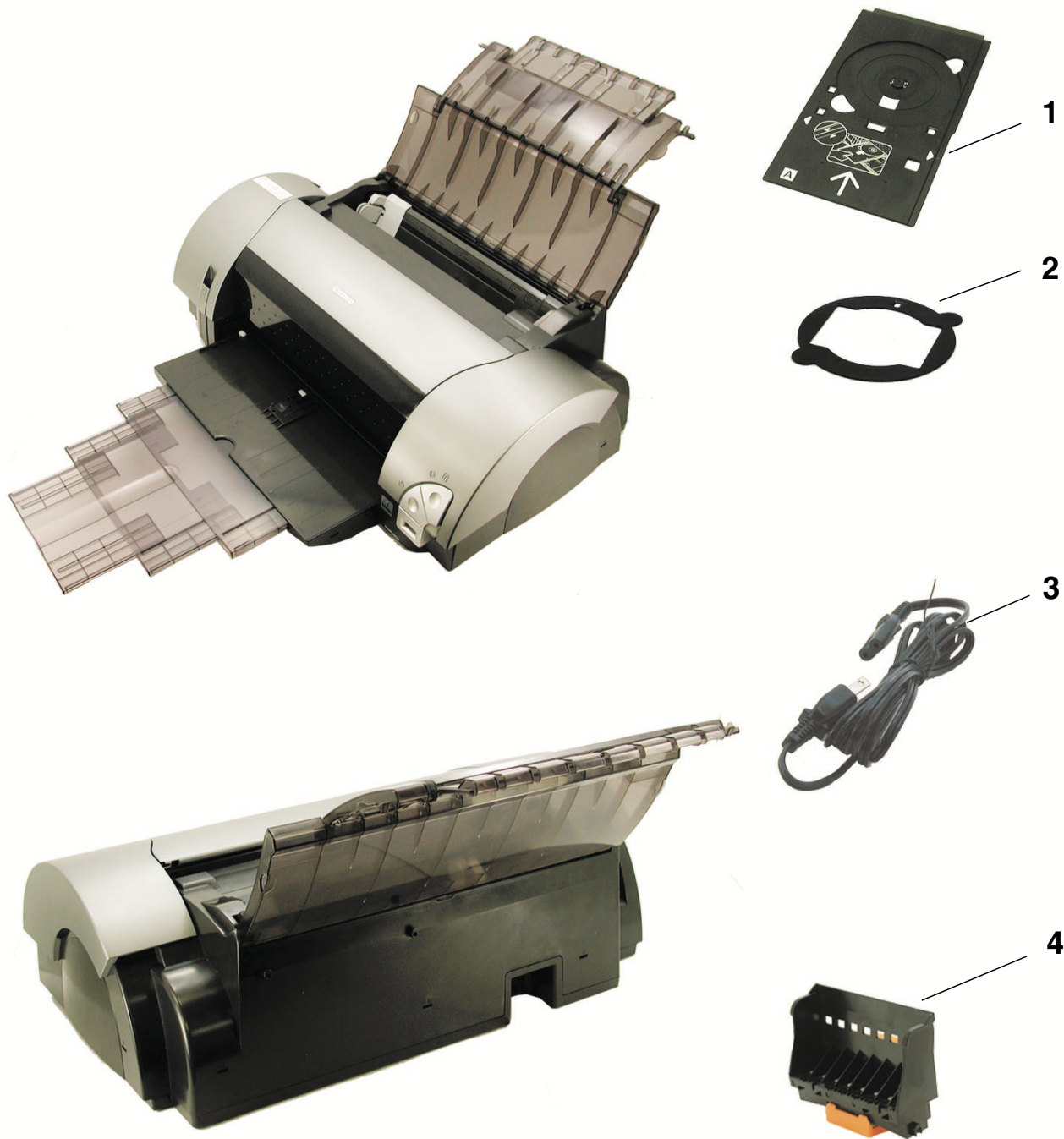


FIGURE & KEY NO.	PART NUMBER	RANK	QTY	DESCRIPTION	REMARKS
1- 1	QL2-0622-000		1	CDR TRAY ASS'Y	
2	QA4-1117-000		1	TRAY, CD SUB	
3	QH2-2720-000		1	CORD, POWER	120V(LAM-LV)
	QH2-2724-000		1	CORD, POWER	100V-120V(JP)
	QH2-2725-000		1	CORD, POWER	100V-120V
	QH2-2726-000		1	CORD, POWER	220V-240V
	QH2-2727-000		1	CORD, POWER	220V-240V(AU)
	WT3-5156-000		1	CORD, POWER	220V-240V(GB, HK)
	WT3-5160-000		1	CORD, POWER	220V-240V(KR)
	WT3-5182-000		1	CORD, POWER	220V-240V(CHN)
4	QY6-0055-000		1	PRINT HEAD	

FIGURE 2 AC ADAPTER & OPERATION PANEL UNIT & UPPER COVER UNIT

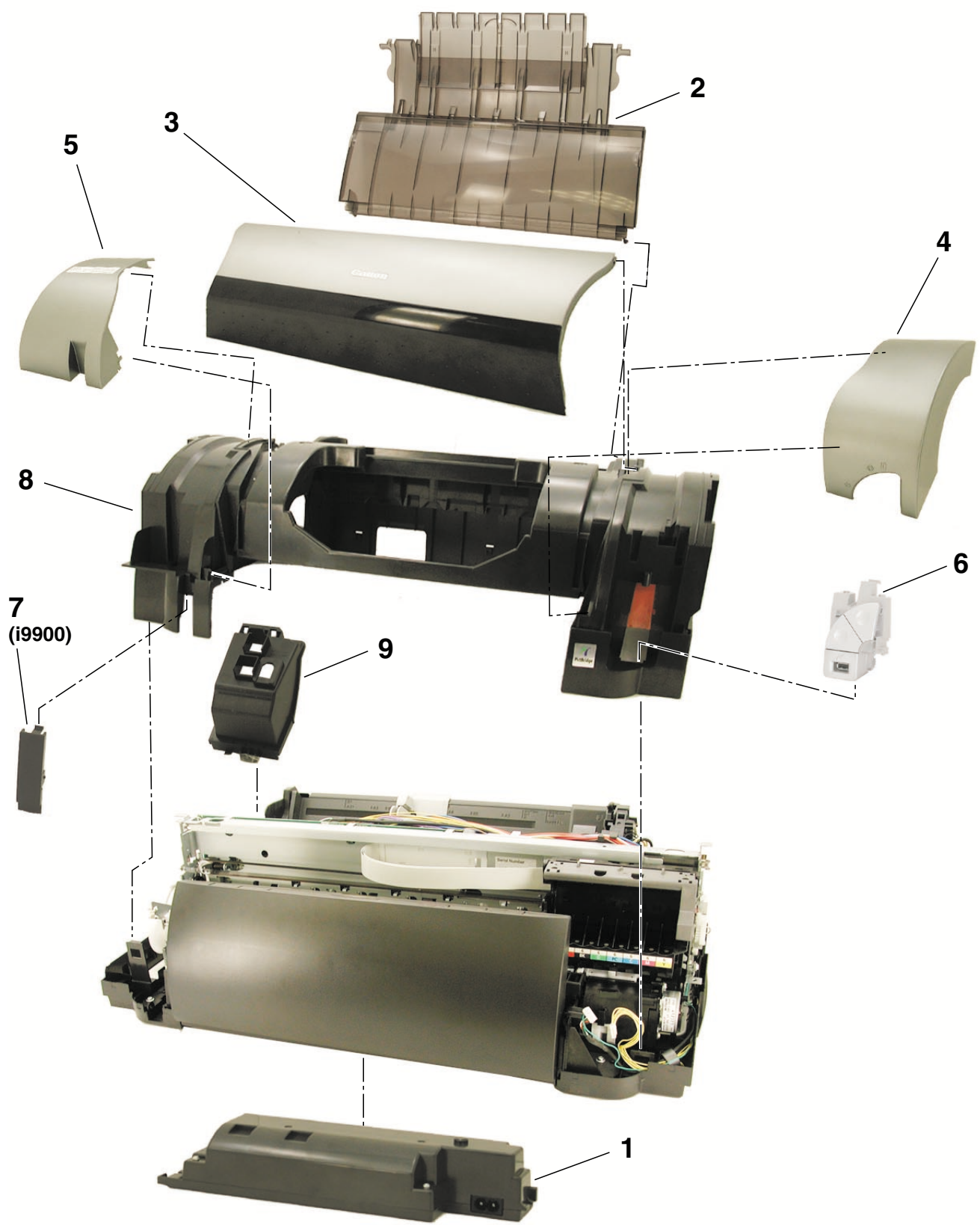


FIGURE & KEY NO.	PART NUMBER	RANK	QTY	DESCRIPTION	REMARKS
2- 1 2 3	QK1-0311-000		1	AC ADAPTER: 100V-120V 50/60HZ	FOR PIXUS 9900i FOR i9950
	QK1-0312-000		1	AC ADAPTER: 220V-240V 50/60HZ	
	QM2-1297-000		1	PAPER SUPPORT UNIT	
	QM2-1314-000		1	ACCESS COVER ASS'Y	
	QM2-1315-000		1	ACCESS COVER ASS'Y	
4 5 6	QM2-1324-000		1	ACCESS COVER ASS'Y	FOR i9900
	QC1-4625-000		1	COVER, SIDE R	FOR PIXUS 9900i, i9950 FOR i9900
	QC1-4624-000		1	COVER, SIDE L	
	QC1-4646-000		1	COVER, SIDE L	
QM2-1295-000		1	OPERATION PANEL ASS'Y		
7 8 9	QC1-4647-000		1	COVER, FRONT	FOR i9900
	QM2-1294-000		1	UPPER COVER UNIT	
	QC1-4597-000		1	COVER, I/F	

FIGURE 3 LOGIC BOARD

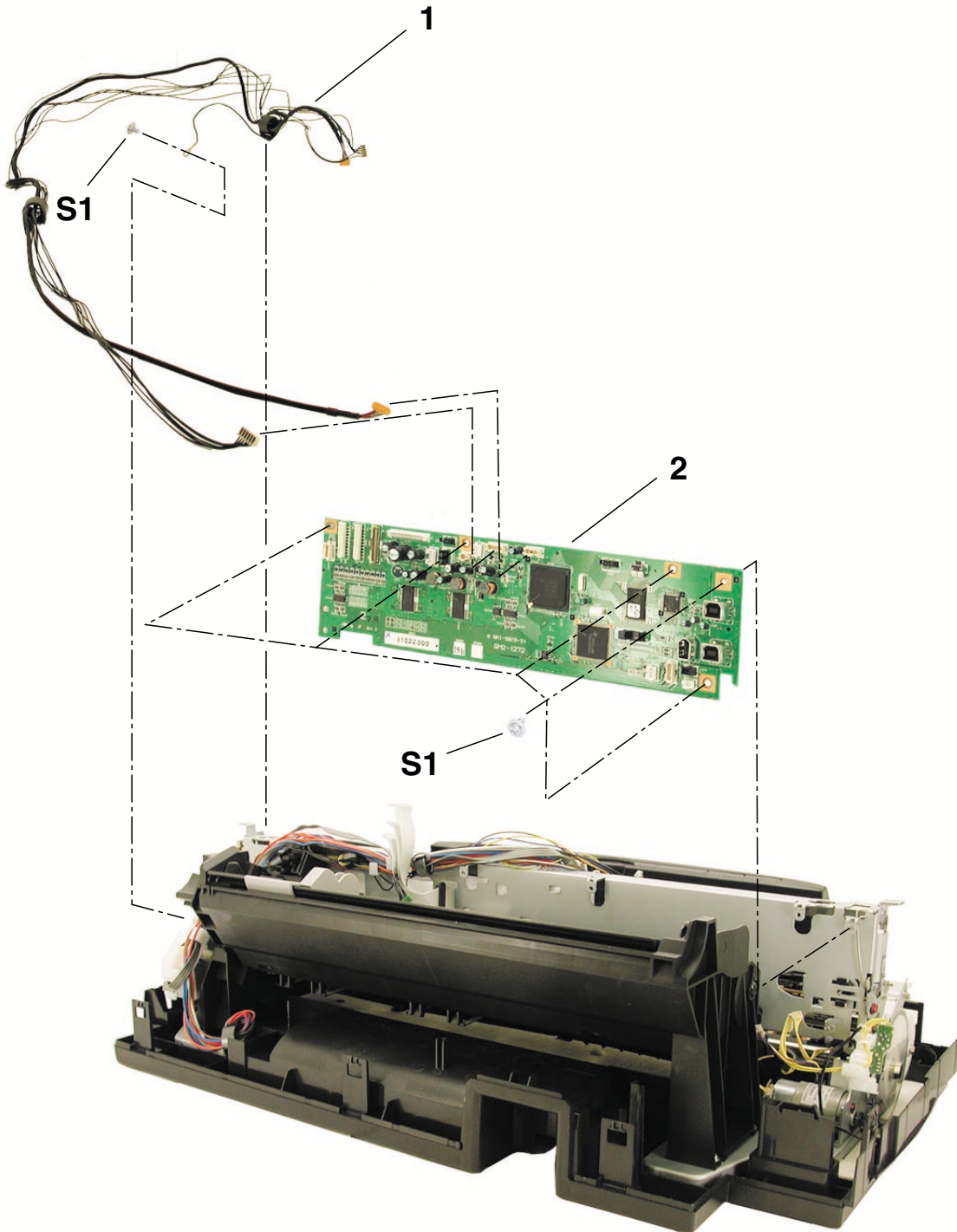


FIGURE & KEY NO.	PART NUMBER	R A N K	Q T Y	DESCRIPTION	REMARKS
3 - 1 2	QM2-1290-000 QM2-1272-000 QM2-1273-000		1 1 1	PANEL HARNESS ASS'Y LOGIC BOARD ASS'Y LOGIC BOARD ASS'Y	FOR PIXUS 9900i, i9950 FOR i9900

FIGURE 4 SHEET FEEDER UNIT & BOTTOM CASE UNIT

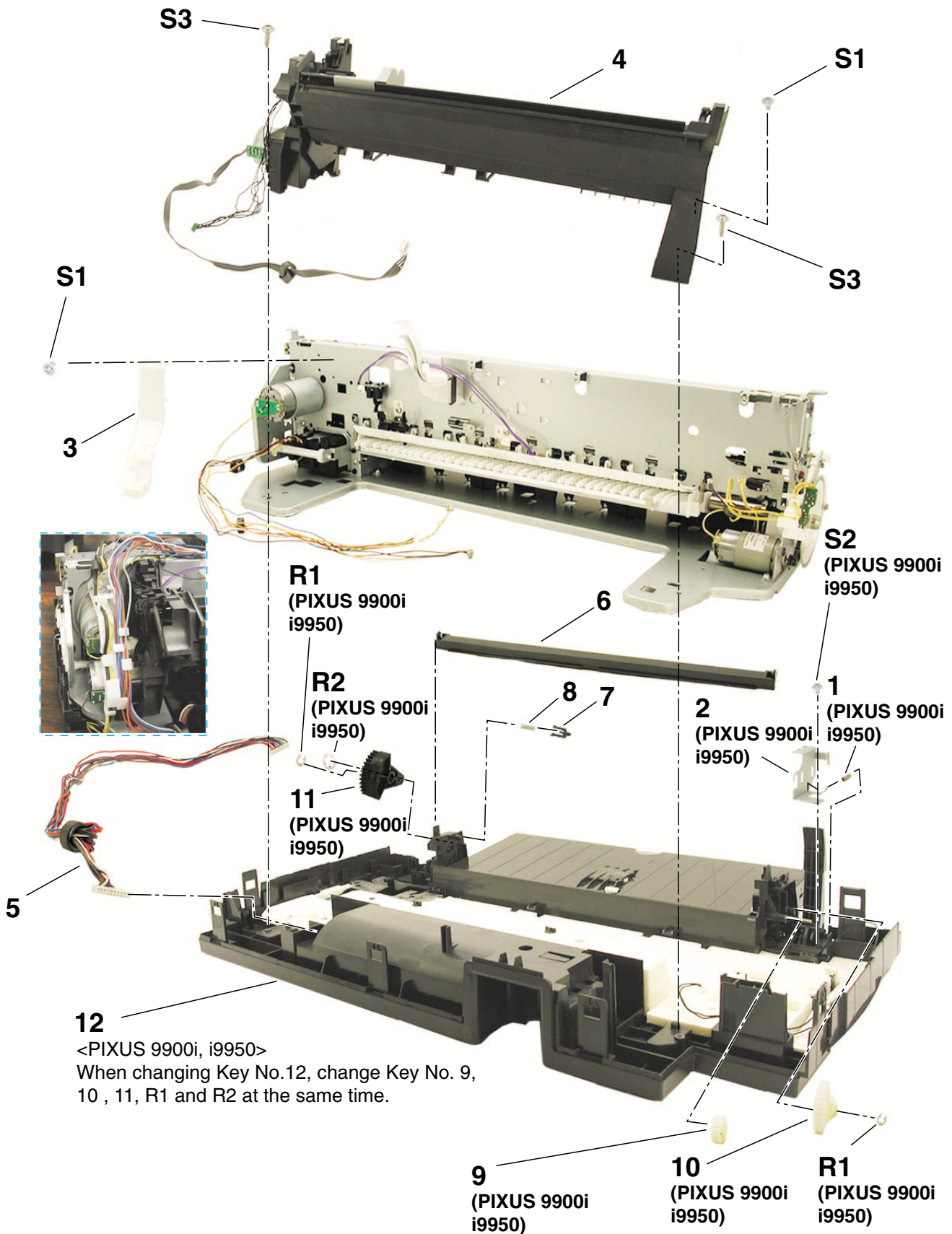


FIGURE & KEY NO.	PART NUMBER	RANK	QTY	DESCRIPTION	REMARKS
4 - 1	QC1-4564-000		1	SPRING, OPERATION LEVER	FOR PIXUS 9900i, i9950
2	QC1-4568-000		1	HOLDER, LIFT GEAR	FOR PIXUS 9900i, i9950
3	QC1-4607-000		1	GUIDE, HARNESS	
4	QM2-1329-000		1	SHEET FEEDER UNIT	W/ MEDIA SENSOR
5	QM2-1276-000		1	DC CONNECTOR ASS'Y	
6	QC1-4609-000		1	BAR, FRONT	
7	QC1-4612-000		1	LOCK, OUT PUT TRAY	
8	QC1-4613-000		1	SPRING, OUT PUT TRAY LOCK	
9	QC1-4558-000		1	GEAR, LIFT IDLER	FOR PIXUS 9900i, i9950
10	QC1-4560-000		1	GEAR, LIFT L	FOR PIXUS 9900i, i9950
11	QC1-4559-000		1	GEAR, LIFT R	FOR PIXUS 9900i, i9950
12	QM2-1325-000		1	BOTTOM CASE UNIT	FOR i9900
	QM2-1328-000		1	BOTTOM CASE/OUT PUT TRAY UNIT	FOR PIXUS 9900i, i9950

FIGURE 5 OUTPUT TRAY & WASTE INK ABSORBER

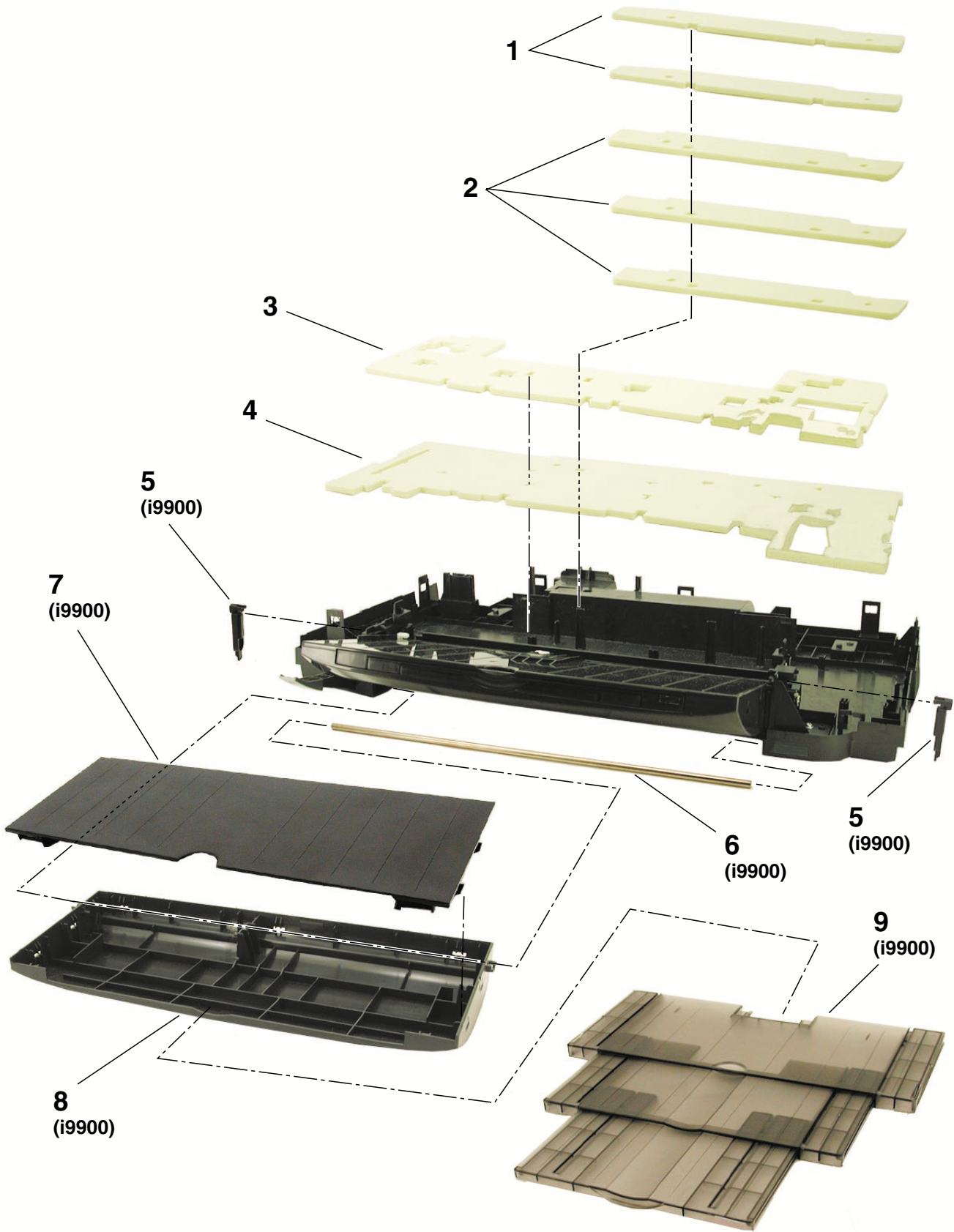


FIGURE & KEY NO.	PART NUMBER	RANK	QTY	DESCRIPTION	REMARKS
5- 1	QC1-4641-000		2	ABSORBER, INK	
2	QC1-4515-000		3	ABSORBER, INK	
3	QC1-4514-000		1	ABSORBER, INK	
4	QC1-4513-000		1	ABSORBER, INK	
5	QC1-4648-000		2	COVER, GEAR BOX	FOR i9900
6	QC1-4649-000		1	SHAFT, OUT PUT TRAY	FOR i9900
7	QC1-4650-000		1	COVER, OUT PUT TRAY	FOR i9900
8	QC1-4619-000		1	BASE, OUT PUT TRAY	FOR i9900
9	QM2-1301-000		1	OUT PUT TRAY UNIT	FOR i9900

FIGURE 6 PLATEN UNIT

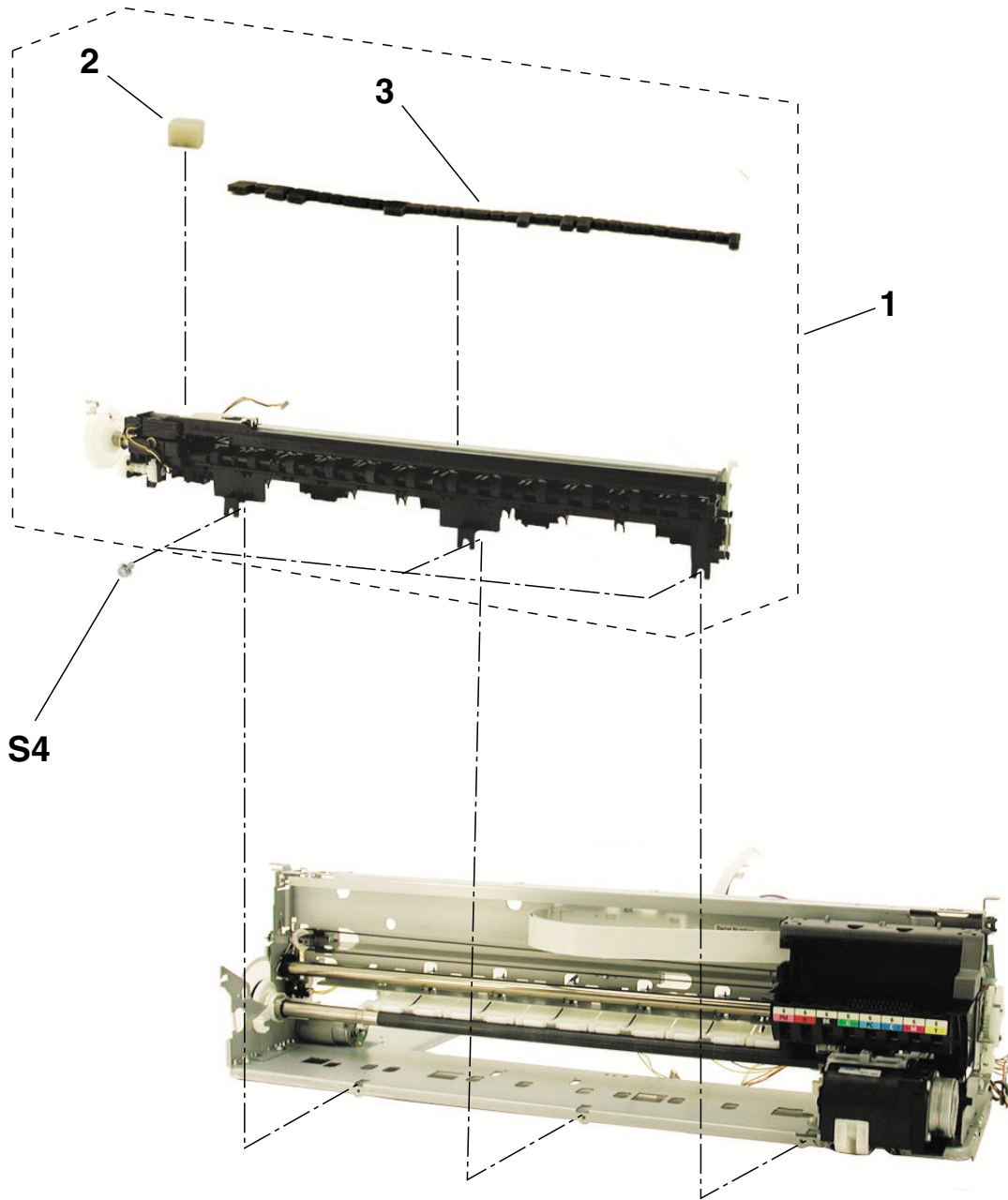


FIGURE & KEY NO.	PART NUMBER	R A N K	Q T Y	DESCRIPTION	REMARKS
6 - 1	QM2-1304-000		1	PLATEN UNIT	FOR PIXUS 9900i, i9950
	QM2-1327-000		1	PLATEN UNIT	FOR i9900
2	QC1-4586-000		1	ABSORBER, INK	
3	QC1-4585-000		1	ABSORBER, INK	

FIGURE 7 PURGE UNIT

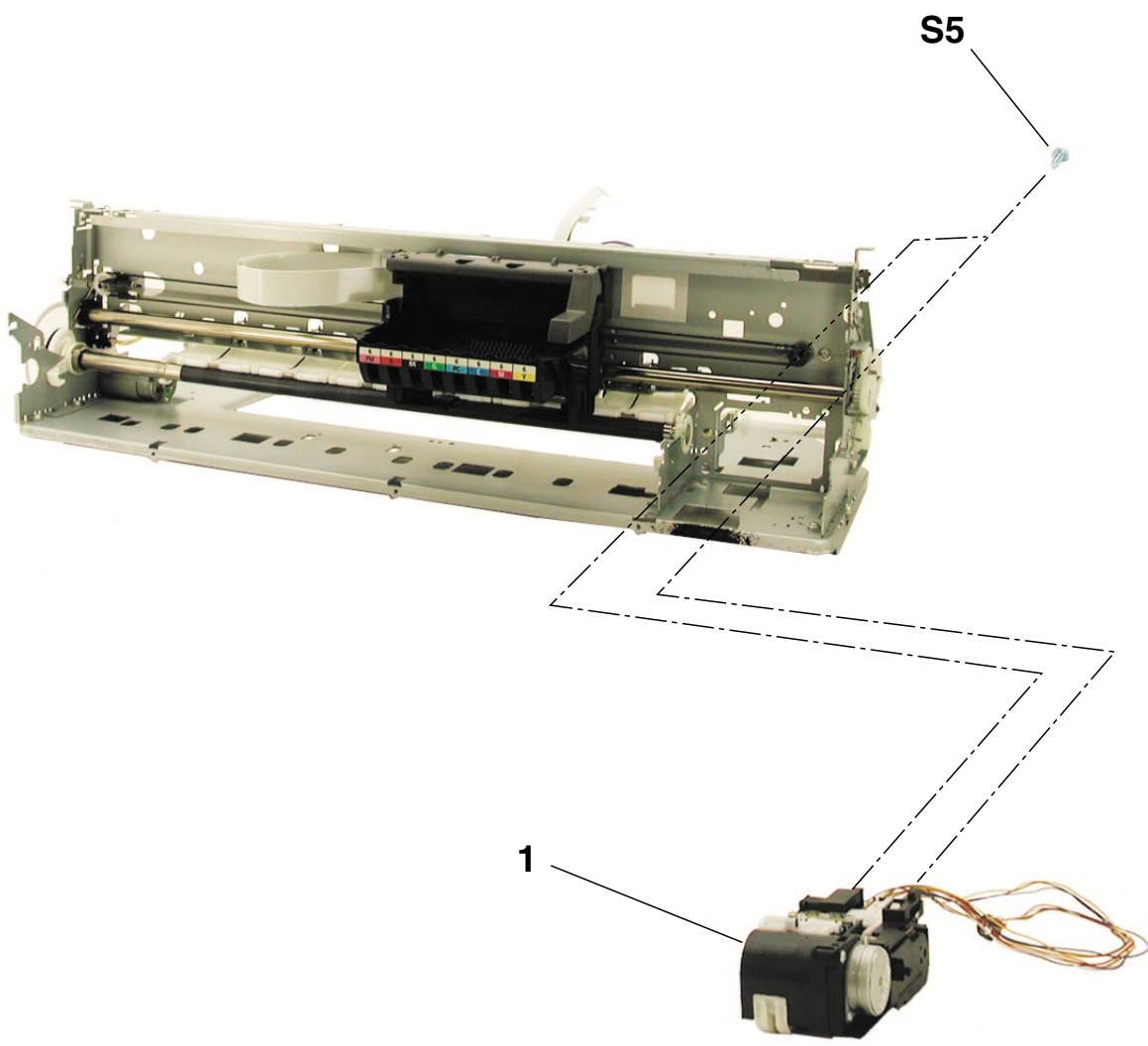


FIGURE & KEY NO.	PART NUMBER	R A N K	Q T Y	DESCRIPTION	REMARKS
7- 1	QM2-1307-000		1	PURGE UNIT	

FIGURE 8 CARRIAGE UNIT

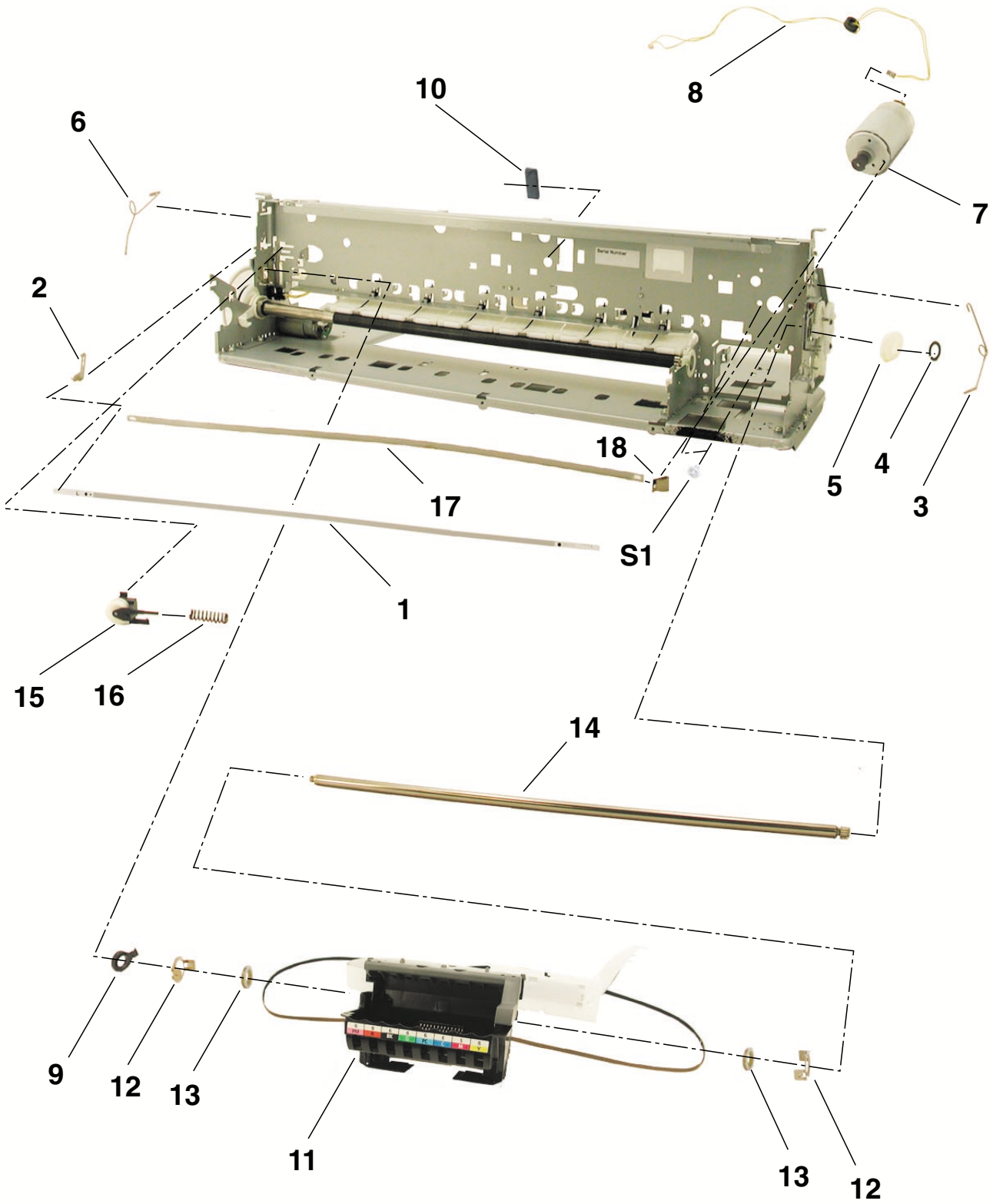


FIGURE & KEY NO.	PART NUMBER	RANK	QTY	DESCRIPTION	REMARKS
8 - 1	QC1-4520-000		1	FILM, TIMING SLIT STRIP	
2	QA4-0990-000		1	SPRING, LEAF	
3	QC1-4639-000		1	CLIP, SHAFT R	
4	QC1-2289-000		1	RING, CARRIAGE SHAFT	
5	QC1-4525-000		1	CAM, CARRIAGE SHAFT R	
6	QC1-4654-000		1	CLIP, SHAFT L	
7	QK1-0175-000		1	MOTOR, CARRIAGE	
8	QM2-1283-000		1	CARRIAGE MOTOR HARNESS ASS'Y	
9	QC1-4526-000		1	CAM, CARRIAGE SHAFT L	
10	WE8-5972-000		1	FERRITE CORE	
11	QM2-1306-000		1	CARRIAGE UNIT	
12	QA4-0723-000	N	2	HOLDER, GREASE PAD	
13	QA4-0721-000		2	PAD, GREASE	
14	QC1-4516-000		1	SHAFT, CARRIAGE	
15	QF4-0153-000		1	IDLER ROLLER ASS'Y	
16	QC1-2290-000		1	SPRING, CARRIAGE BELT TENSION	
17	QC1-4517-000		1	PLATE, CARRIAGE SLIDE	
18	QA4-0988-000		1	SPRING, LEAF	

FIGURE 9 CARRIAGE LIFT PART

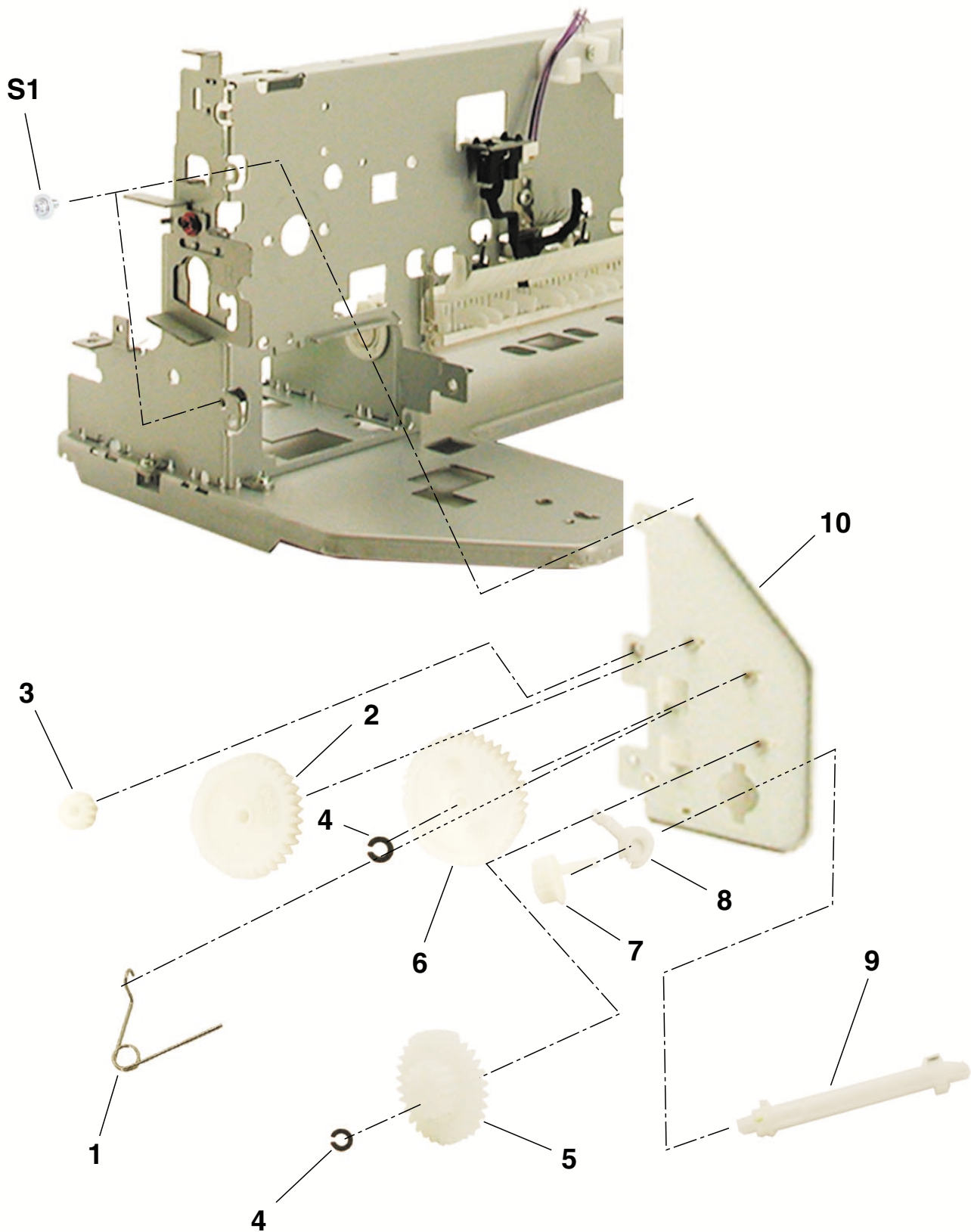


FIGURE & KEY NO.	PART NUMBER	RANK	QTY	DESCRIPTION	REMARKS
9- 1	QC1-4523-000		1	CLIP, LIFT FRICTION	
2	QC1-4621-000		1	GEAR, LIFT TRANSMISSION	
3	QC1-2298-000		1	GEAR, CARRIAGE INPUT	
4	QA4-1177-000		2	RING, LIFT GEAR	
5	QC1-4631-000		1	GEAR, LIFT TRANSMISSION	
6	QC1-4632-000		1	GEAR, LIFT TRANSMISSION	
7	QC1-4527-000		1	GEAR, LIFT INPUT	
8	QC1-2301-000		1	BUSHING	
9	QC1-2657-000		1	SHAFT, LIFT INPUT GEAR	
10	QL2-0629-000	N	1	LIFT BASE ASS'Y	

FIGURE 10 PAPER FEED PART (1)

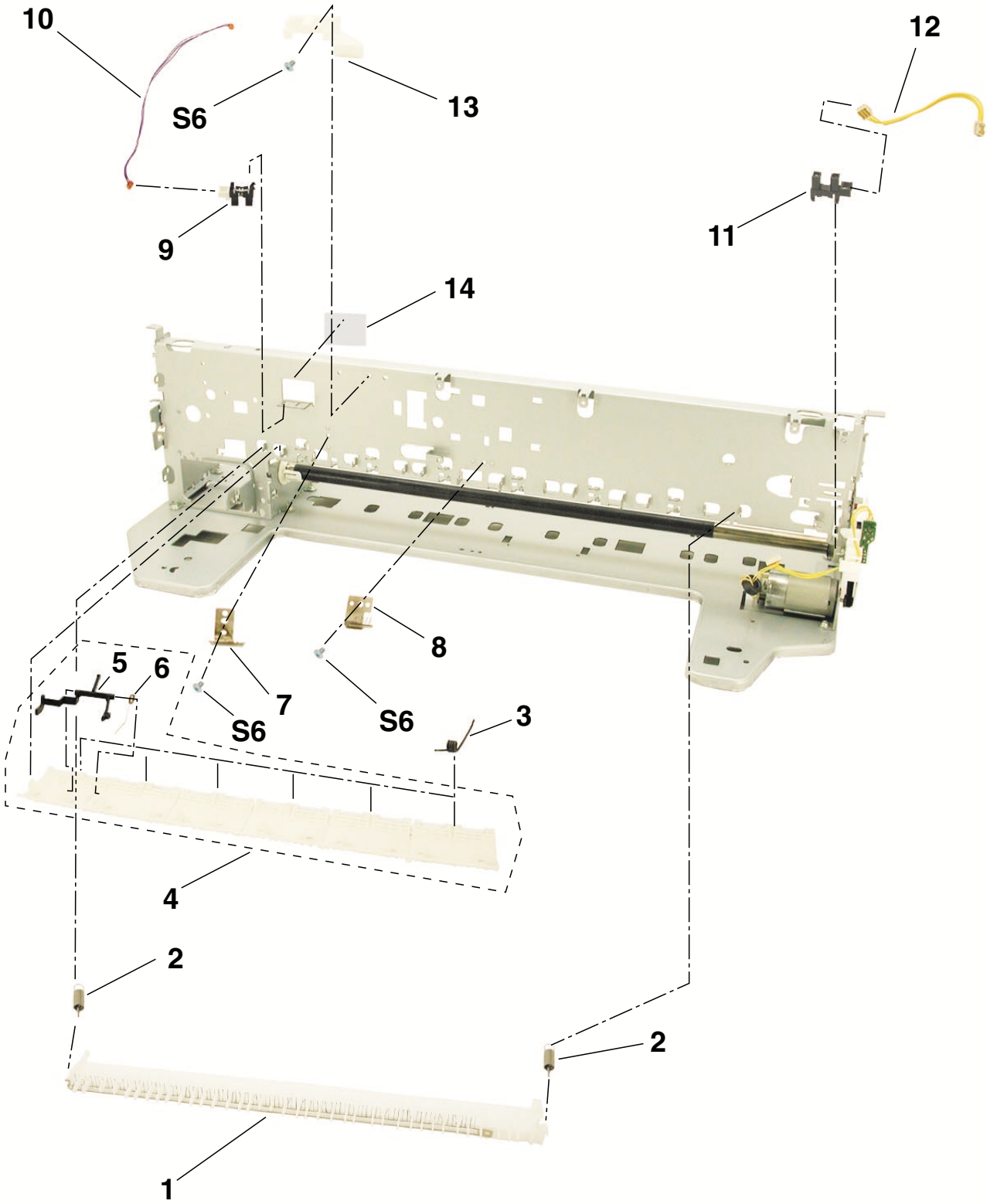


FIGURE & KEY NO.	PART NUMBER	RANK	QTY	DESCRIPTION	REMARKS
10 - 1	QL2-0627-000		1	PAPER GUIDE FLAPPER ASS'Y	
2	QC1-4577-000		2	SPRING, HOOK END COIL	
3	QA4-1168-000		6	SPRING, TORSION	
4	QM2-1305-000		1	PRESSURE ROLLER ASS'Y	
5	QC1-4554-000		1	ARM, PAPER SENSOR	
6	QA4-1166-000		1	SPRING, TORSION	
7	QC1-4553-000		1	BRUSH, ROLLER R	
8	QC1-4552-000		1	BRUSH, ROLLER L	
9	WG8-5362-000		1	PHOTO INTERRUPTER, TLP1241	
10	QM2-1280-000		1	CABLE, PAPER SENSOR	
11	WG8-5571-000		1	PHOTO INTERRUPTER: TLP1243(C8)	
12	QM2-1281-000		1	LIFT CAM HARNESS ASS'Y	
13	QC1-4634-000		1	GUIDE, HARNESS	
14	QA4-1287-000		1	TAPE, MIST	

FIGURE 11 PAPER FEED PART (2)

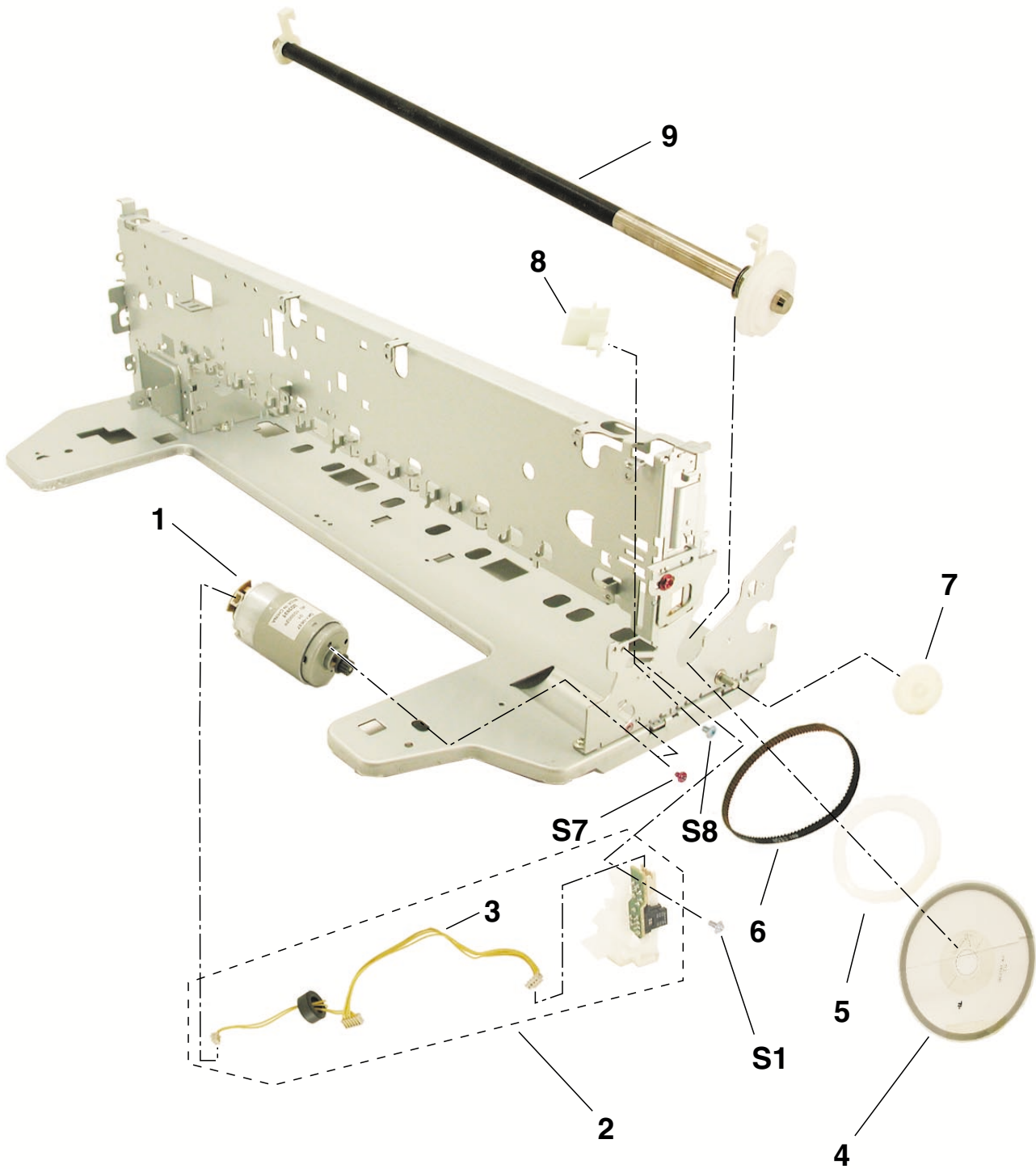


FIGURE & KEY NO.	PART NUMBER	R A N K	Q T Y	DESCRIPTION	REMARKS
11- 1 2 3 4 5	QK1-0637-000 QM2-1322-000 QM2-1286-000 QC1-2484-000 QA4-1169-000		1 1 1 1 1	MOTOR, PAPER FEED TIMING SENSOR UNIT LF MULTI HARNESS ASS'Y FILM, TIMING SLIT DISK FLANGE, PULLEY	
6 7 8 9	QC1-2286-000 QA4-1162-000 QC1-4635-000 QL2-0626-000		1 1 1 1	BELT, PAPER FEED GEAR, EJECT BASE, LIFT SENSOR FEED ROLLER ASS'Y	

C. OPTIONS & CONSUMABLES

FIGURE 12 OPTION & CONSUMABLES



FIGURE & KEY NO.	PART NUMBER	RANK	QTY	DESCRIPTION	REMARKS
12- 1	NPN		1	BLACK INK TANK BCI-6BK	CONSUMABLES
	NPN		1	CYAN INK TANK BCI-6C	CONSUMABLES
	NPN		1	MAGENTA INK TANK BCI-6M	CONSUMABLES
	NPN		1	YELLOW INK TANK BCI-6Y	CONSUMABLES
	NPN		1	PHOTO CYAN INK TANK BCI-6PC	CONSUMABLES
	NPN		1	PHOTO MAGENTA INK TANK BCI-6PM	CONSUMABLES
	NPN		1	RED INK TANK BCI-6R	CONSUMABLES
	NPN		1	GREEN INK TANK BCI-6G	CONSUMABLES

D. SCREWS & WASHERS LIST

FIGURE & KEY NO.	PART NUMBER	RANK	QTY	DESCRIPTION	REMARKS
R- 1	XD2-1100-322			RING, E M3.2	
2	XD2-2300-602			RING, TOOTHED LOCK	
S- 1	XB6-7300-605			SCREW, MACHINE, WASHER HEAD, M3x6	
2	XA9-0476-000			SCREW, TP M3X8	
3	XA9-1258-000			SCREW, TAP, WASHER HEAD, M3X12	
4	XB2-4300-605			SCREW, W/WASHER, M3X6	
5	XB4-7300-805			SCREW, TP, BH3X8	
6	XB1-2300-405			SCREW, MACH.BH, M3X4	
7	XA9-1437-000			SCREW, BIND, M2.6X4(REDF)	
8	XB4-7300-605			SCREW, BH M3X6	

This page intentionally left blank

E. TOOL

FIGURE 13 TOOL

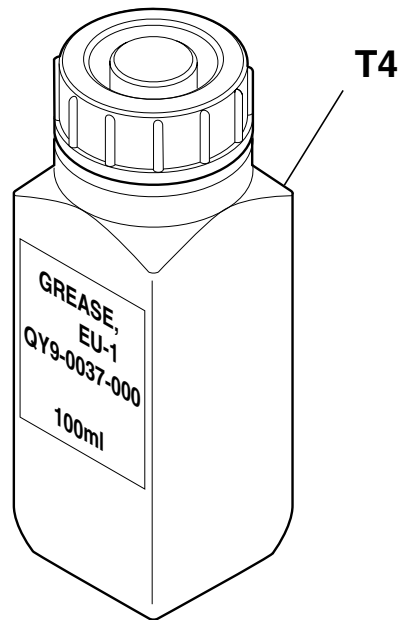
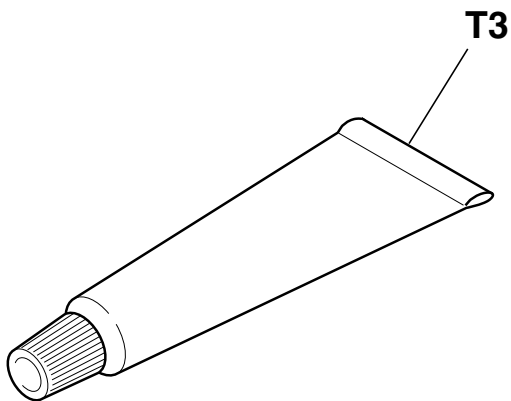
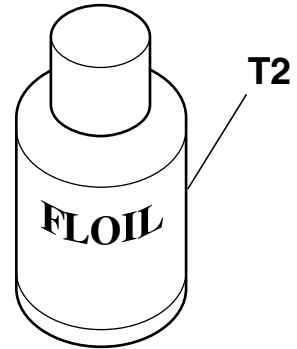


FIGURE & KEY NO.	PART NUMBER	RANK	QTY	DESCRIPTION	REMARKS
T - 1	QY9-0064-000		1	CALIBRATION MEDIA KIT	
2	QY9-0057-000		1	LUBE, FLOIL KG107A, OIL	
3	CK-0562-000		1	GREASE, MOLYKOTE PG-641	
4	QY9-0037-000		1	GREASE EU-1	

F. NUMERICAL INDEX

PART NUMBER	FIGURE & KEY NO.	DESCRIPTION
CK-0562-000	T - 3	GREASE, MOLYKOTE PG-641
QA4-0721-000	8 - 13	PAD, GREASE
QA4-0723-000	8 - 12	HOLDER, GREASE PAD
QA4-0988-000	8 - 18	SPRING, LEAF
QA4-0990-000	8 - 2	SPRING, LEAF
QA4-1117-000	1 - 2	TRAY, CD SUB
QA4-1162-000	11 - 7	GEAR, EJECT
QA4-1166-000	10 - 6	SPRING, TORSION
QA4-1168-000	10 - 3	SPRING, TORSION
QA4-1169-000	11 - 5	FLANGE, PULLEY
QA4-1177-000	9 - 4	RING, LIFT GEAR
QA4-1287-000	10 - 14	TAPE, MIST
QC1-2286-000	11 - 6	BELT, PAPER FEED
QC1-2289-000	8 - 4	RING, CARRIAGE SHAFT
QC1-2290-000	8 - 16	SPRING, CARRIAGE BELT TENSION
QC1-2298-000	9 - 3	GEAR, CARRIAGE INPUT
QC1-2301-000	9 - 8	BUSHING
QC1-2484-000	11 - 4	FILM, TIMING SLIT DISK
QC1-2657-000	9 - 9	SHAFT, LIFT INPUT GEAR
QC1-4513-000	5 - 4	ABSORBER, INK
QC1-4514-000	5 - 3	ABSORBER, INK
QC1-4515-000	5 - 2	ABSORBER, INK
QC1-4516-000	8 - 14	SHAFT, CARRIAGE
QC1-4517-000	8 - 17	PLATE, CARRIAGE SLIDE
QC1-4520-000	8 - 1	FILM, TIMING SLIT STRIP
QC1-4523-000	9 - 1	CLIP, LIFT FRICTION
QC1-4525-000	8 - 5	CAM, CARRIAGE SHAFT R
QC1-4526-000	8 - 9	CAM, CARRIAGE SHAFT L
QC1-4527-000	9 - 7	GEAR, LIFT INPUT
QC1-4552-000	10 - 8	BRUSH, ROLLER L
QC1-4553-000	10 - 7	BRUSH, ROLLER R
QC1-4554-000	10 - 5	ARM, PAPER SENSOR
QC1-4558-000	4 - 9	GEAR, LIFT IDLER
QC1-4559-000	4 - 11	GEAR, LIFT R
QC1-4560-000	4 - 10	GEAR, LIFT L
QC1-4564-000	4 - 1	SPRING, OPERATION LEVER
QC1-4568-000	4 - 2	HOLDER, LIFT GEAR
QC1-4577-000	10 - 2	SPRING, HOOK END COIL
QC1-4585-000	6 - 3	ABSORBER, INK
QC1-4586-000	6 - 2	ABSORBER, INK
QC1-4597-000	2 - 9	COVER, IF
QC1-4607-000	4 - 3	GUIDE, HARNESS
QC1-4609-000	4 - 6	BAR, FRONT
QC1-4612-000	4 - 7	LOCK, OUT PUT TRAY
QC1-4613-000	4 - 8	SPRING, OUT PUT TRAY LOCK
QC1-4619-000	5 - 8	BASE, OUT PUT TRAY
QC1-4621-000	9 - 2	GEAR, LIFT TRANSMISSION
QC1-4624-000	2 - 5	COVER, SIDE L
QC1-4625-000	2 - 4	COVER, SIDE R
QC1-4631-000	9 - 5	GEAR, LIFT TRANSMISSION
QC1-4632-000	9 - 6	GEAR, LIFT TRANSMISSION
QC1-4634-000	10 - 13	GUIDE, HARNESS
QC1-4635-000	11 - 8	BASE, LIFT SENSOR
QC1-4639-000	8 - 3	CLIP, SHAFT R
QC1-4641-000	5 - 1	ABSORBER, INK
QC1-4646-000	2 - 5	COVER, SIDE L
QC1-4647-000	2 - 7	COVER, FRONT
QC1-4648-000	5 - 5	COVER, GEAR BOX

PART NUMBER	FIGURE & KEY NO.	DESCRIPTION
QC1-4649-000	5 - 6	SHAFT, OUT PUT TRAY
QC1-4650-000	5 - 7	COVER, OUT PUT TRAY
QC1-4654-000	8 - 6	CLIP, SHAFT L
QF4-0153-000	8 - 15	IDLER ROLLER ASS'Y
QH2-2720-000	1 - 3	CORD, POWER
QH2-2724-000	1 - 3	CORD, POWER
QH2-2725-000	1 - 3	CORD, POWER
QH2-2726-000	1 - 3	CORD, POWER
QH2-2727-000	1 - 3	CORD, POWER
QK1-0175-000	8 - 7	MOTOR, CARRIAGE
QK1-0311-000	2 - 1	AC ADAPTER: 100V-120V 50/60HZ
QK1-0312-000	2 - 1	AC ADAPTER: 220V-240V 50/60HZ
QK1-0637-000	11 - 1	MOTOR, PAPER FEED
QL2-0622-000	1 - 1	CDR TRAY ASS'Y
QL2-0626-000	11 - 9	FEED ROLLER ASS'Y
QL2-0627-000	10 - 1	PAPER GUIDE FLAPPER ASS'Y
QL2-0629-000	9 - 10	LIFT BASE ASS'Y
QM2-1272-000	3 - 2	LOGIC BOARD ASS'Y
QM2-1273-000	3 - 2	LOGIC BOARD ASS'Y
QM2-1276-000	4 - 5	DC CONNECTOR ASS'Y
QM2-1280-000	10 - 10	CABLE, PAPER SENSOR
QM2-1281-000	10 - 12	LIFT CAM HARNESS ASS'Y
QM2-1283-000	8 - 8	CARRIAGE MOTOR HARNESS ASS'Y
QM2-1286-000	11 - 3	LF MULTI HARNESS ASS'Y
QM2-1290-000	3 - 1	PANEL HARNESS ASS'Y
QM2-1294-000	2 - 8	UPPER COVER UNIT
QM2-1295-000	2 - 6	OPERATION PANEL ASS'Y
QM2-1297-000	2 - 2	PAPER SUPPORT UNIT
QM2-1301-000	5 - 9	OUT PUT TRAY UNIT
QM2-1304-000	6 - 1	PLATEN UNIT
QM2-1305-000	10 - 4	PRESSURE ROLLER ASS'Y
QM2-1306-000	8 - 11	CARRIAGE UNIT
QM2-1307-000	7 - 1	PURGE UNIT
QM2-1314-000	2 - 3	ACCESS COVER ASS'Y
QM2-1315-000	2 - 3	ACCESS COVER ASS'Y
QM2-1322-000	11 - 2	TIMING SENSOR UNIT
QM2-1324-000	2 - 3	ACCESS COVER ASS'Y
QM2-1325-000	4 - 12	BOTTOM CASE UNIT
QM2-1327-000	6 - 1	PLATEN UNIT
QM2-1328-000	4 - 12	BOTTOM CASE/OUT PUT TRAY UNIT
QM2-1329-000	4 - 4	SHEET FEEDER UNIT
QY6-0055-000	1 - 4	PRINT HEAD
QY9-0037-000	T - 4	GREASE EU-1
QY9-0057-000	T - 2	LUBE, FLOIL KG107A, OIL
QY9-0064-000	T - 1	CALIBRATION MEDIA KIT
WE8-5972-000	8 - 10	FERRITE CORE
WG8-5362-000	10 - 9	PHOTO INTERRUPTER, TLP1241
WG8-5571-000	10 - 11	PHOTO INTERRUPTER: TLP1243(C8)
WT3-5156-000	1 - 3	CORD, POWER
WT3-5160-000	1 - 3	CORD, POWER
WT3-5182-000	1 - 3	CORD, POWER
XA9-0476-000	S - 2	SCREW, TP M3X8
XA9-1258-000	S - 3	SCREW, TAP, WASHER HEAD, M3X12
XA9-1437-000	S - 7	SCREW, BIND, M2.6X4(RED)
XB1-2300-405	S - 6	SCREW, MACH.BH, M3X4
XB2-4300-605	S - 4	SCREW, W/WASHER, M3X6
XB4-7300-605	S - 8	SCREW, BH M3X6
XB4-7300-805	S - 5	SCREW, TP, BH3X8

PART NUMBER	FIGURE & KEY NO.	DESCRIPTION
XB6-7300-605	S- 1	SCREW, MACHINE, WASHER HEAD, M3x6
XD2-1100-322	R- 1	RING, E M3.2
XD2-2300-602	R- 2	RING, TOOTHED LOCK

This page intentionally left blank

Canon